



BP Refinery (Kwinana) 2011 Capital Plan

Grant Worner – Kwinana Refinery CFO

2011 Capital Plan Overview



- \$100M capital investment in BP's Kwinana Refinery in 2011
- Investment spend is split
 - 55% Compliance and Plant Integrity
 - 45% Growing the Business
- Four projects represent 60% of investment spend
 - Additional Butane Storage
 - G10 Capability Improvement
 - Pipeline between the refinery and Coogee Chemicals' terminal
 - New laboratory building
- Remaining 40% of investment spend is on compliance and plant integrity

Additional Butane Storage Project



WHAT

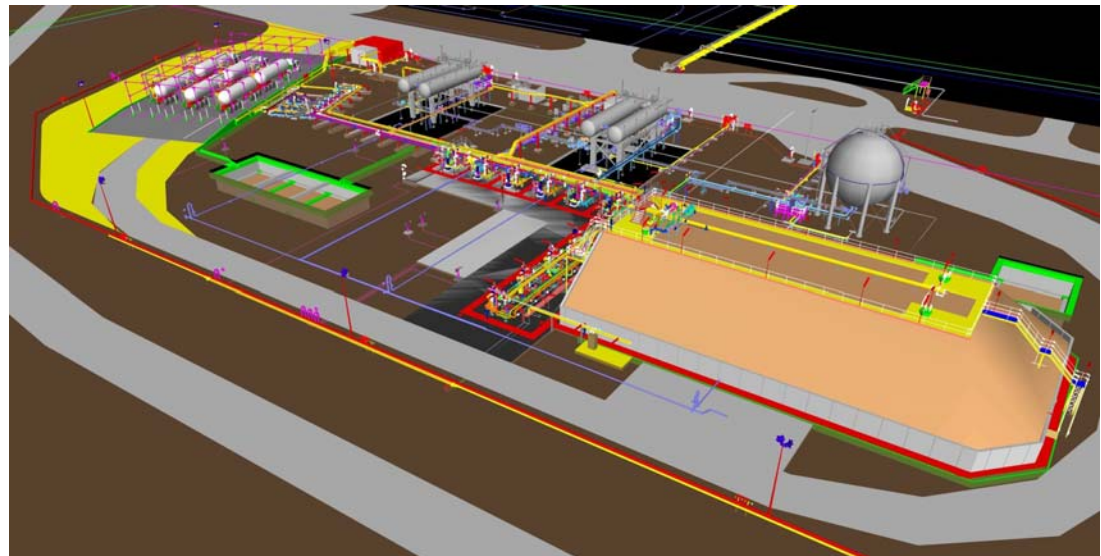
- Two mounded vessels, loading gantry, and associated infrastructure

WHY

- To store and sell butane into markets which cannot be captured with existing infrastructure
- Significant risk reduction in the LPG area, including fire and gas detection, and provision of water deluge protection for the vessels and loading gantry

WHEN

- Construction begins 1Q 2010
- Vessels arrive on site 3Q 2010
- Commissioning 2Q 2011



G10 Capability Improvement Project



WHAT

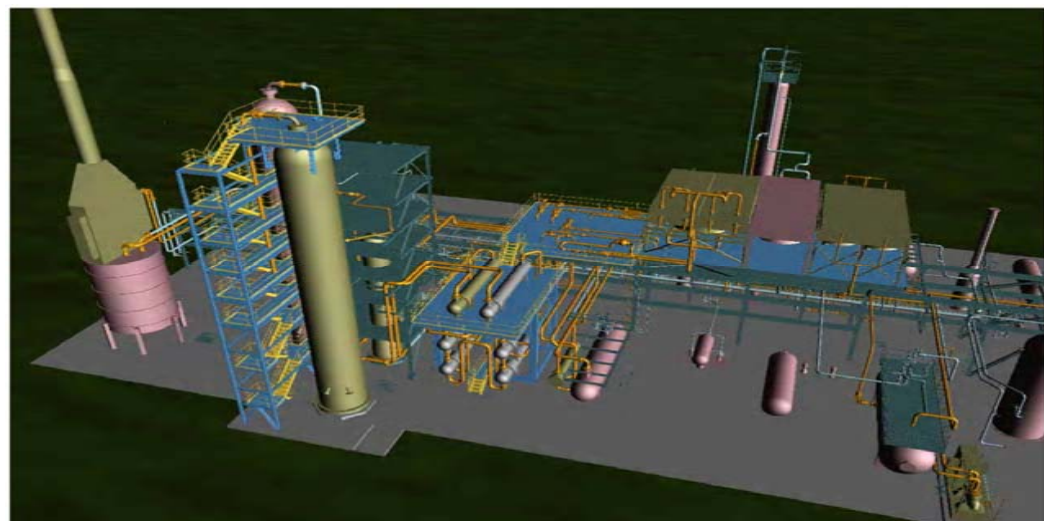
- Revamp the existing diesel Hydrotreater 2 process unit,
 - An additional reactor
 - Replace the reactor effluent air coolers (REACs)
 - Debottlenecking of the high-pressure loop

WHY

- Reduce risk and restore production capability lost as the Australian specification for diesel has reduced from 500ppm to 50ppm sulphur in 2006 and to 10ppm in 2009
- Restore catalyst life from 6 to 24 months, improving availability and reducing HSE risk associated with inert entry.

WHEN

- Construction begins 3Q 2010
- Reactor arrives on site 1Q 2011
- Commissioning 2Q 2011



Southern Line Upgrade Project



WHAT

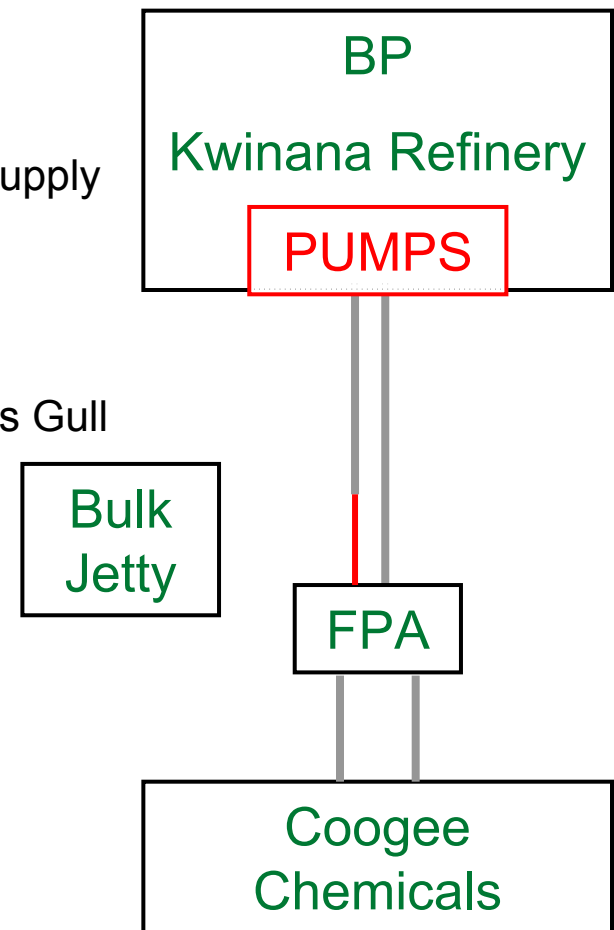
- Modify existing lines from BP Refinery to Coogee Chemicals' tank terminal
- Segregate products to enable diesel product to transfer in separate system to petrol grades.
- Install dedicated pumps on site at BP Refinery Kwinana to supply products to the pipeline.

WHY

- Accommodate anticipated increasing supply requirements as Gull & Coogee Chemicals Terminals consolidated.

WHEN

- Construction to commence 1Q 2011
- Commissioning and operation 4Q 2011



New Laboratory Project



WHAT

- Construction of a new laboratory building
 - Relocation of all testing facilities to the new building, including octane test engines
 - Also includes process analyser workshop and support facilities

WHY

- Existing building has become dilapidated, with many of the critical services beyond repair
- New building complies with new structural standards for occupied buildings, with consequential reduction of major accident risk
- Improved efficiency by effective and flexible layout

WHEN

- Construction has begun (Apr 2011)
- Commissioning 1Q 2012

